

MATTER OF FACT

OCTOBER 2017

A free monthly community newspaper for Venus Bay, Tarwin Lower and district.
Published by Venus Bay Community Centre. Vol 10 Issue Number 10



The Tarwin Lower Mechanics Institute Hall has had a make-over! With financial support generously acknowledged from Bald Hills Wind Farm community fund and South Gippsland Shire Council community grants program, the hall Committee of Management has been able to start works on repairing the beloved local hall. Governed by a DELWP appointed committee of management (as the hall sits on Crown Land), the committee have been working hard to raise funds and awareness of both the history of the hall (the oldest mechanic's institute hall in our shire) and the urgent need for repairs and upgrades for this facility. It's great to see the painting of the interior of the hall and



to see works being undertaken to repair the guttering...but there is still a lot of work to be done! The Hall committee are doing a great job to provide opportunities for the hall to be used for local music and events...there are a couple of shows coming up in the next month. This grand old dame is part of the fabric and history of our district and she needs some tender loving care. Let's work together to restore this building so it remains a wonderful asset for our area



NHVIC SAYS 'YES' TO MARRIAGE EQUALITY

The Vision of Neighbourhood Houses Victoria is "Strong and vibrant communities that value diversity." This clearly puts our position as valuing diversity and not just 'tolerating' diversity. Neighbourhood Houses Victoria is proud to support the 'yes' campaign for marriage equality. People who identify as LGBTQI are universally welcome in Neighbourhood Houses. They contribute to what makes our sector such a valued part of Victoria's community infrastructure. Marriage equality reflects the principles and values that are enshrined in our constitution. All Australians should be treated equally in the eyes of the law — and that includes being able to marry the person we love. Currently not all of our neighbourhood house participants share the same rights and opportunity to legally marry the person they love. This is easily fixed through a vote in Parliament. The Venus Bay Community Centre is a member of Neighbourhood Houses Victoria and adds our voice to the support for marriage equality in Australia.

LIZZIE FLYNN

YOU AND THE OPEN SKY TOUR 2017

album launch concert

with special guests

The Reckoning, Zumpa, Lisa Lazuli, Strat & Lyndal



With a combination of lyrical honesty and charming melodies, Brisbane songwriter Lizzie Flynn writes songs that blend a little satirical storytelling with a lot of joyful emotion. Her latest collection of songs weaves audiences through toe-tapping country to tender folk ballads... songs of lessons learnt and love lost.

www.lizzieflynn.com | www.facebook.com/lizzieflynnmusic

8pm SATURDAY 28 OCTOBER
TARWIN LOWER MECHANICS INSTITUTE HALL

4 acts for \$20 ADULTS, \$15 CONCESSION. TICKETS from Tarwin Lower Mitre 10,
at the door and ONLINE FROM: www.trybooking.com/RTYJ

Doors open 7pm, BYO Drinks, Glasses & Nibbles. Enquiries: david@goodtunes.com.au



THE WIKIMEN



www.facebook.com/TheWikimen/

DOORS

OPEN

7:30PM

CAFE CULTURE SERIES
TARWIN LOWER HALL
Sat., Nov. 4th.
8PM

B.Y.O.

DRINKS

& NIBBLES

Upbeat and fun band 'The Wikimen' will perform extraordinarily vast styles of music from their huge repertoire including Hawaiian blues, pop, samba, Western Swing and Mills Brothers songs to name a few, complete with heavenly harmonies and exotica music. The show features songs from their new CD.

Presented by Tarwin Lower Hall & South Gippsland Shire Council

TICKETS AT : Tarwin Lower Mitre 10 Hardware

BOOKINGS ☎ 5662 9202 or sophied@southgippsland.vic.gov.au

Just shows to go

CREATIVE VICTORIA



Friends of Venus Bay Peninsula Inc

ABN 17 536 241 485

PO Box 244 Venus Bay Vic 3956

Website: www.friendsofvenusbaypeninsula.org.au

Email: friendsofvbp@gmail.com

Plant of the month: Small Rice-flower *Pimelea humilis*



Small Rice-flower *Pimelea humilis* is a low sprawling sub-shrub, growing to 30 cm high, with hairy young stems that have prominent nodes. The smooth green to grey-green leaves are opposite, elliptic, 6-16 mm long x 1-9 mm wide, usually paler beneath. Below the flowerhead are 4 or 6 ovate, involucre bracts that are wider than the leaves.

Flowerheads consist of 12-52 scented creamy-white, 4-lobed tubular flowers, from September to January, followed by small, dry fruit. It has been found at Venus Bay and usually grows in sandy heathland and drier forest in Victoria, New South Wales, South Australia and Tasmania.

Small Rice-flower is an attractive low bush that tolerates most well drained soil types in full sun or semi-shade. It is butterfly attracting. Propagation is from cuttings

Pimelea belongs in the Thymelaeaceae family. The genus name *Pimelea* is from the Greek *pimele*, fat, referring to the oily seeds. *Humilis* is from the Latin meaning small or low to the ground.





Walkerville Foreshore Master Plan

COMMUNITY WORKSHOP

COME AND DISCUSS

The Walkerville Foreshore Reserve Committee of Management is undertaking a Master Plan study to protect and enhance natural, coastal and landscape values. The development of a Master Plan will guide improvements for the coastal edge between Walkerville Hall and the Walkerville camping reserve/kiosk to the north.

An initial community meeting was held on 8 July 2017 to provide the community with an opportunity to discuss key issues including current problems, coastal processes, growing numbers of peak season visitors, facilities, services and opportunities for change. Thank you to those who were involved.

The committee invites you to be an active part of the next phase of consultation - a community workshop. The session will involve:

- A recap of analysis findings from the first consultation session,
- An overview of schematic design ideas,
- Group discussion
- Possible Master Plan design themes

Date: Saturday 7 October, 2017

Time: 11:00am – 1:00pm

Venue: Walkerville Hall, Bayside Drive
Walkerville, VIC, 3959

Tract Consultants (landscape architects, urban designers and planners) will be leading the consultation and engagement process.

Please confirm your attendance on facebook or to **walkervilleforeshoremp@gmail.com**

If you can't attend the session, please keep up to date with the progress of the project via email or facebook. An online survey will be made available after the workshop for those unable to participate on the day.

You will be notified when the draft Analysis, Initial Consultation and Schematic Design Report is available for review.

We hope to see some familiar and fresh faces!



Open Garden - Illabunda

This garden in Venus Bay is called Illabunda which means *Place of Swallows*.

This large coastal block has a significant, remnant old growth forest of *Eucalyptus viminalis* ssp. *pyroriana* (Coast Manna Gum). The long driveway on this beautiful and tranquil property winds through *Banksia integrifolia* bushland towards Anderson Inlet.

Closer to the house, grassy areas open up around huge, sculptural eucalypts which are underplanted with garden beds which feature a wide range of Australian plants: thomasias, correas, stylidium, grevilleas, acacias (including two *leprosa* 'Scarlet Blaze'), and many smaller banksias (including *baueri*, *speciosa*, *praemorsa*) are some of the plant genera that thrive here.

There are also groves of young casuarina and 'moonah' (*Melaleuca lanceolata*) and a large fenced productive area with raised beds. An extensive nursery area produces many of the 7000 plants that are added to the garden each year. Around the house, with its views towards the inlet, are sculptures, potted plants and grasses. Planting also extends into the inlet walk at the rear of the property, as the owners want to reinstate the indigenous species wherever possible.



This property has a warm and welcoming 'feel'; it clearly reflects the owners' love of the whole environment in which it sits.

This garden in Venus Bay is called Illabunda which means *Place of Swallows*.

This large coastal block has a significant, remnant old growth forest of *Eucalyptus viminalis* ssp. *pyroriana* (Coast Manna Gum). The long driveway on this beautiful and tranquil property winds through *Banksia integrifolia* bushland towards Anderson Inlet.

Closer to the house, grassy areas open up around huge, sculptural eucalypts which are underplanted with garden beds which feature a wide range of Australian plants: thomasias, correas, stylidium, grevilleas, acacias (including two *leprosa* 'Scarlet Blaze'), and many smaller banksias (including *baueri*, *speciosa*, *praemorsa*) are some of the plant genera that thrive here.

There are also groves of young casuarina and 'moonah' (*Melaleuca lanceolata*) and a large fenced productive area with raised beds. An extensive nursery area produces many of the 7000 plants that are added to the garden each year. Around the house, with its views towards the inlet, are sculptures, potted plants and grasses. Planting also extends into the inlet walk at the rear of the property, as the owners want to reinstate the indigenous species wherever possible.

This property has a warm and welcoming 'feel'; it clearly reflects the owners' love of the whole environment in which it sits.

Saturday 21st and Sunday 22nd October 2017

10am-4:30pm

Entry price \$8 (U18 free) Students \$5

For more information or to get directions please visit

www.opengardensvictoria.org.au



LIGHT & LANDSCAPE



ANGUS GUNN
MANDY GUNN

TO BE OPENED BY WELL KNOWN
CURATOR, HISTORIAN AND LOCAL
RESIDENT **SHERIDAN PALMER**.
3-5PM SUNDAY NOVEMBER 5TH
[CUP WEEKEND] BYO WELCOME.

EXHIBITION RUNS FRI NOV 3RD-SUN NOV 26TH
ENQUIRIES: MANDY GUNN 0411 257 045



THIRSTY WORK GALLERY
RIVER DRIVE
TARWIN LOWER

OPEN WED-SUN 10-4



Boomerang Bag Making at IGA

Make sure you get down to the Tarwin Lower IGA on Monday, as our fabulous volunteers will be there between 11am and 2pm, to show you how you can make these great re-usable shopping bags!



Alternatively, you can always come along to the Centre on Wednesdays and join in the fun!

Monday 2nd October



The 'Melbourne Cup' at Tarwin Lower Bowls Club.

Our annual Melbourne Cup Day event will be from 12 noon on Tuesday, 7th November. \$25 per head includes champagne on arrival and a sumptuous lunch.

Come prepared for sweeps and our "Fashion on the field" parade with prizes for best dressed Lady and couple. All welcome.

For individual or group bookings phone Mary Massier, 0419600263 or Pat O'Donohue, 0408581573.



Free Garden Mulch

*The council will be at the Venus Bay waste transfer station on **21st and 22nd October** 9:30am-3:30pm, to help load the free garden mulch into your trailer or ute, at no cost to you.*



If you cannot make it these days, mulch is available throughout the year (until they run out!) so feel free to contact the council by heading to www.southgippsland.vic.gov.au, to see a list of waste transfer stations and operating hours. You will however need to load it up yourself if attending outside of the October dates and times listed above.



Carols by Candle Light:

Presented: By the Tarwin Lower Union Church.

Christmas is just around the corner, and in this country of ours we are already planning for what we are going to do on this festive season. Last year the Tarwin Lower Union Church organised Carols by Candle Light on December 22 which was very successful. Many people who love to sing came along to our practices not only to sing, but also to join in the tradition of singing Christmas Carols to celebrate the birth of our Lord Jesus Christ. This year we invite you again, if you would like to sing, to join us at church after the services on Sundays, and help us expand the volume and harmony of the Christmas cords.

Last year we had more women than men. This year we may perhaps hear from more men.

Rehearsals will start on Sunday 8th October at the Tarwin Lower Church after the Service at 12.00 approx.

Please ring: Kerry Gregoric at 5663 7860 or Marlene Miller 0419 345 128 .



**BICYCLE
NETWORK®**

For those who are not yet aware, Bicycle Network are bringing their RACV Great Victorian Bike Ride to Gippsland for 2017!!!

They are looking to engage the local communities with volunteering at the event. There are volunteering roles include something for everybody – from setting up tents, to helping the catering team; from being a mechanic out on the road to manning an intersection; from organizing the campsite to being a Happy Helper and source of information, there really is a place for everyone.

Furthermore, all meals, transport, and accommodation for the event (24 Nov – 3 Dec) is covered, so this is a great way to give back while getting out and meeting new people and revisiting the sights.

Jump onto the website at <https://www.bicyclenetwork.com.au/volunteer/racv-great-vic/> to see all the available roles and find more information on this fantastic event.

Rubbish Bins



Don't forget that red and yellow 6-month bins go out starting from **Monday 6th November**.

Any 6-month bins put out before that date will not be collected.

If you would like to change to a 12-month service you can contact the council on 5662 9200.



**FUN FOR
ALL AT
TARWIN
BOWLS
CLUB**



BAREFOOT BOWLS

2017/2018 COMPETITION

**10 Weeks of competition
Commences Tuesday 14th November**

**5 weeks before Xmas and 5 after plus
finals.**

Games to commence at 6pm

Single players or three person teams.

- **\$5.00 per player per game**
- **10 ends per game**
- **Bring your own bowls or bowls
supplied**
- **BBQ each night / Raffle each night**
- **Footwear - flat smooth soled shoes,
barefoot or thongs. (No work boots)**

No experience required it's all about the fun.

Contact: Jamie 0412 749 468

VENUS BAY COMMUNITY OP SHOP



Free kids' books!

Have you been to the Op Shop recently?

We have some great bargains and a great range of relatively new books for the spring season.

We have a large selection of kids' books....and we are giving them away for FREE with every op-shop purchase!!



We are always willing to take donations in good condition but remember we have limited space so we like to see larger items first.

The Op Shop welcomes new volunteers and is a great place to get some new work skills if that is what you need or a great way to meet other people in your local community.

If you are interested in volunteering come into The Venus Bay Community Centre and have a chat to Alyson.

OPENING HOURS
MONDAY, WEDNESDAY, THURSDAY
9.30 TO 3.00
SATURDAY 10AM TO 2 PM
27 CANTERBURY ROAD, VENUS BAY



Venus Bay, Tarwin Lower & District Men's Shed
190 Lees Road Venus Bay
A0057129V

10th Anniversary Celebration

This year is the 10th Anniversary of the Venus Bay Tarwin Lower Men's shed. It was inaugurated on October 8, 2007.

To celebrate the occasion, the Committee of Management is organizing a "back-to" the VBTL Men's Shed, on Saturday November 4, 2017 "Melbourne Cup" long weekend.

It all started on The Christmas Break-up dinner- dance at the Venus Bay Community Centre in December 2006, Michael Hibbit was talking about how the Venus Bay Community Centre was mainly utilized by various community groups, mostly women groups. Perhaps, he said, it would be nice if we could form a men's group to get together once a fortnight at the VBCC to have a cup of tea and chat. He went on to say that he strongly believed that such a group would give the men something to look forward to each month. He put this question to those of us who were with him on his table. I remembered that I said I would be interested if and when he is ready to organise the first meeting. Then he rang me sometime in January and told me that he has organised with a few men to have a meeting on Monday 7 February 2007 at 10am.



There were six people who turned up to that meeting. Michael Hibbit, Geoff Hartshorn, Norman Fink, Karl Gunther, Bruno Trenning and Don Kennedy.

The following was decided:

- That we meet every fortnight and that we pay \$3.00 each to cover the cost of our space in the Venus Bay Community Centre.
- That we conduct a Fine Session to get a few laughs and help to cover our costs.
 - That we ask more men to our next meeting.
- That we try to pass the word around our district to as many men as we possibly can.

Michael Hibbit facilitated the meetings, while Don Kennedy recorded the highlights from every meeting.

At our 2nd meeting we managed to bring in another six men, and that, briefly was how we started. Later we heard about the Men's Shed Organization. Michael Hibbit and I went with Cr. Kieran Kennedy to the first Victorian Gathering of Men's Sheds hosted by the Sunshine Men's Shed.

On October 8, 2007 meeting, a motion was passed that we form a Men's Shed for the surrounding area of Venus Bay Tarwin Lower and District. We decided to look for Grants to build our shed. Our shed was then known as "The Men's Den". Michael Hibbit was duly elected as our President, Don Kennedy as Secretary and Geoff Hartshorn as the Treasurer.

We were auspiced by the VBCC while they were under section 86 of the South Gippsland Council.

Currently our shed is incorporated and is a member of the Australian Men's Shed Association (AMSA) and a member of Victorian Men's Shed Association (VMSA).

Compiled and written by Don Kennedy.



Tarwin Lower Primary School

School Road
Tarwin Lower 3956
Ph. 56635263

tarwin.lower.ps@edumail.vic.gov.au

"Small School, Big Opportunities"
Cooperation, Kindness, Resilience, Respect

Term 3 ended with a Bang!



Parents and Friends enjoyed the projects made by all the students.

The grade 4/5/6 student projects were about Animal Adaptations. The Preps had made their own animals!



Mrs Haasjes has been to our school over the past few weeks, telling the students about the Christmas Boxes. These boxes are sent overseas to children living in poverty. The school helped to fill 10 of these boxes full of presents. Teaching the students how they can make a positive difference to someone else's life.



Awards!

Aunty Kylie taught us about wombats, and we laughed as they followed her around everywhere!



Awards!



Awards!



We all dressed in our Sports Colours and had a great day 😊

Small Bytes – October 2017

This month we will look at a centralised home media server called Plex.

Plex Media Server is a user-friendly way to store all your movies, shows, other media in one place and make it accessible from any device, you're at home or on-the-go. If you're looking for a no-headache way to your movies anywhere, this is it. Plex is a free client-server media player system and software suite comprising two main components.



and whether watch

- The Plex Media Server runs on Windows, macOS and Linux. It organizes your audio (music) and visual (photos and videos) content from your personal media libraries and streams it to their player counterparts.
- The players can either be the Plex Apps available for tablets, smartphones and streaming boxes, or the Plex Web App.

In order to use Plex you must firstly place your videos, photos and music on a PC hard drive or attached external drive and organise them into a simple folder structure (if you haven't already).

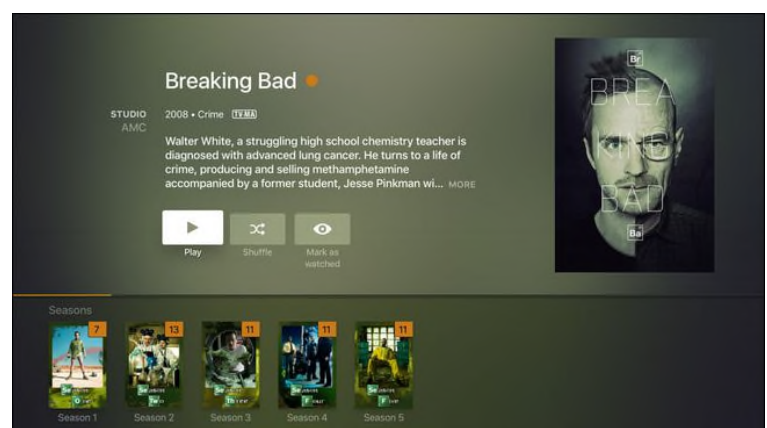
The next step is to install the Plex Media Server on the same computer. It is a free download from this link – <https://www.plex.tv/how-it-works/>

The Plex model is simple: you park all your media on a single computer with the Plex server software installed, and then you install the Plex app on all your other devices. You can install it on any of your devices including video game consoles like Xbox and PlayStation, your Apple TV, and there are even smart TVs that come with Plex built right in. Then, from any of those devices, you can remotely access your entire media library and watch it without hassle. For example, one family member could watch one of your movies on a TV in one room whilst another watches a different movie in another room on another TV or tablet. The same for your photos and music.

Further, because the Plex model is a server/client one, you don't have to worry about copying files to your various devices and dealing with issues like playback quality, video resolution, and other details. The Plex server will transcode all your media content on the fly, so that it plays properly on whatever device you're using. Not only do you get on-demand streaming to all your devices but you get absolutely beautiful metadata and art to go along with it. Without having to do any searching the Plex server will automatically download matching media images and information about all your movies, TV shows and music etc.

Note : Downloading the metadata and installation of the Plex apps and server software will use some of your monthly internet download allowance, but this will **not** be excessive. Streaming your own movies and music locally (around your house) will **not** use any of your download allowance.

However, importantly if you wish to access your personal media when you are **away** from your home then obviously you will use mobile data and that could be excessive. Ensure that option is deselected when installing the Server application. Finally, for the Media Server to operate it requires that your host computer and hard drive be switched on and available.



The National Disability Insurance Scheme

Changing Lives



Ability Dignity Access Management (ADAM inc.) is thrilled to present three guest speakers who will talk about the NDIS and how it has impacted on their lives. Adam and Kira-Lee transitioned early this year to the NDIS and Geni accessed the NDIS last year. Each speaker will bring their own individual story with time to ask questions during and after the talks over a cuppa.

Date Saturday 21st October

Venue Leongatha RSL Club

Crn Smith St & Michael Pl,
Leongatha. VIC. 3953
In the Members Lounge.

Time 2.00 PM

Please **RSVP** by 18th October, either phone 0417 547 475 or email info@adam.org.au

We will be holding our 11th ADAM inc. AGM. at 1.00pm at the RSL. You are more than welcome to attend this prior to the talks on **CHANGING LIVES.**





The Bald Hills Wind Farm Community Fund was established in 2015 to provide ongoing support to local community clubs and organisations. The Community Fund is overseen by the Community Fund Committee which is made up of volunteers from the local community, with Bald Hills Wind Farm providing administrative support.

The Community Fund provides money for projects of social, economic or environmental benefit to the Tarwin Lower, Venus Bay, Walkerville districts. This may include funding for local sporting groups, charities, community groups, education, culture, arts and other not-for-profit organisations or other community needs*.

Bald Hills Wind Farm will donate \$25,000 to the Community Fund each year that the wind farm is in operation. Any funds not utilised are carried over to the next year. Funds are allocated in two categories: Small Projects of up to \$2,000 and a District Project of up to \$5,000 that can demonstrate community partnership and a benefit to the wider community.

The following projects worth just over \$25,000 have been awarded funds for 2017:

DISTRICT PROJECT

- **Tarwin Lower Mechanics Hall titled 'Replace Guttering around hall building' for \$3,693**

SMALL PROJECTS.

- **Venus Bay & District Community Emergency Response Team Inc. titled 'Defib our community for life' for \$2,000**
- **Venus Bay Surf Lifesaving Club Inc. titled 'Priority 1: Audio Visual equipment for training' for \$2,000**
- **Tarwin Netball Club titled 'Strengthening Tarwin's Netballers' for \$2,000**
- **Walkerville Ratepayers Residents Association Inc. titled 'Wildlife Rescue' for \$2,000**
- **Tarwin Lower Primary School titled 'Information Communication Technology Equipment' for \$2,000**
- **Tarwin Landcare titled 'Shared bike and walking track' for \$1,950**
- **Friends of Venus Bay Inc. titled 'Wombat Mange Management Program' for \$2,000**
- **Tarwin Lower & District Community Health Centre titled 'Health Centre blind spot' for \$1,927**
- **Venus Bay Community Centre Inc. titled 'Priority 1: Pedal Power' for \$2,000**
- **Venus Bay Surf Lifesaving Club Inc. titled 'Priority 2: Enduro Ironman Tarwin Lower' for \$1,200**
- **Grants Only Group titled 'Office and Stationary supplies' for \$500**
- **Tarwin Football/Netball Club Inc. titled 'Warming the Soul of the TFNC for \$2,000**

The Committee resolved that the remaining \$2,770 will be rolled over to support the 2018 community fund applications.

SANDY POINT MUSIC CLUB: PRESENTS

The Little Stevies - Saturday 28 October at 8pm

The Little Stevies - Byll and Beth Stephens are coming to Sandy Point on Saturday 28th October.

The Little Stevies are loved as much for their masterful songwriting ability as for their wondrous live performances.

Byll & Beth have an uncanny knack to captivate an audience by being delightfully and unapologetically themselves. There's something alluring in the authenticity

of their often-hilarious storytelling.

The sisters' songs tend to leave a lasting impression, with tales that are akin to your favourite stories put to music. Falling somewhere in the folk-pop musical landscape, they boast layered sibling harmonies, irresistible melodies and fascinating arrangements.

Over the years the band has toured Australia, Canada, the US and New Zealand extensively, which has earned them an exceptional reputation as a must see live act.

You can find out more about both events by visiting the Music Club Facebook page, www.facebook.com/sandypointmusic and book tickets at www.trybooking.com

The Teeny Tiny Stevies - Sunday 29 October at 10.30 - 11.30am

Teeny Tiny Stevies had their beginnings as a side project for sisters Sibylla and Bethany Stephen's alt-folk-pop band 'The Little Stevies'. Though a children's music project, it's quite likely different than anything you've heard before.

It all began when Sibylla's (Byll's) first child hit 'toilet training' age. When she asked childcare if there were any books or songs that might help introduce the idea of going to the toilet she was handed just one, pretty basic, storybook. After an online search revealed even less inspiring musical options, the penny dropped - they should write their own.

And so the idea was born. They would create a children's album in which every song included would be useful and practical, starting with going to the toilet ...on the toilet!



KOALA PROJECT FOR SANDY POINT

The sandy point community group is thrilled to announce that funding of nearly \$50,000 has been granted to the Sandy Point Koala Project through the Community Biodiversity Grants program of the Victorian State Government.



The project targets on the ground action programs and this one will see a range of projects over 3 years to deliver conservation projects on public and private land to deliver a range of activities to help protect and expand habitats for Victoria's native plants and animals. The project started last weekend with the first ever Koala count in Sandy Point. Over 3 hours community members counted 29 koalas, acknowledging that there would be more that were not spotted on the day. The project will see a range of educational activities, habitat mapping and will include planting programs to increase habitat corridors for our beloved and threatened koala population. For more information: sandypointkoalas@gmail.com and for the full release: <http://www.premier.vic.gov.au/community-biodiversity-grants-released/>



Councillor corner

Well, life as a councillor certainly has its challenges. One thing I have learned in my time so far is that the wheels of local government move slowly! As council, we have one meeting per month at which we make strategic decisions; the agenda is usually jam packed with matters each councillor needs to clearly understand and investigate in order to make an informed decision. At the most recent council meeting, there were some hefty decisions to be made. For me, I do my best to be as informed as I can about all the matters coming before us across the whole shire, and this takes a

significant amount of time, and lots of phone calls and emails! Some decisions can be personally challenging, and one I gave a significant amount of thought to was the proposed broiler farm development in Wooreen. In the end, I detailed my reasons for not supporting the application, and chose to represent the significant concerns of some of our community members at the table. I believe this is part of the role of a councillor; however I also understand it comes at a potential cost to the organisation who may have to defend this position at VCAT.

I see there has been some concern emerging about the transition of services under the old HACC (Home and Community Care) services. I can assure our residents that clients will not have their services compromised. This is a really complex situation that has emerged as a result of changes to funding models about aged and disability services that have traditionally been delivered by local councils. Services are moving towards a client based approach; where existing and new clients are able to take charge of their Home Care Support Package; the matter is also complicated by changes in the NDIS (National Disability Insurance Scheme) funding model. These are matters that council needs to fully address over time, and has promised to keep the community informed in the journey to the best solution/model and where council may fit into that. The time period for transition is long, and in the meantime, council has ensured that all clients will be supported in any transition that may occur.

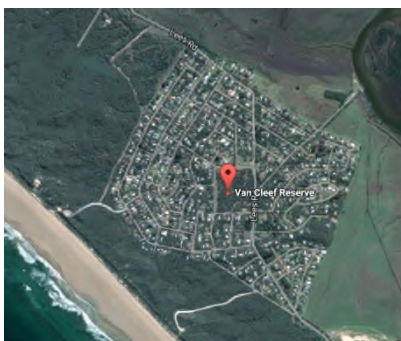
The development application for the subdivision of the land surrounding the Venus Bay caravan park came up for discussion at our last meeting; this development has triggered an objection regarding potential flooding and will be referred to a planning panel. This may present an interesting precedent regarding not only future development, but the impact of further building along our coastal towns. My fellow councillors and I will be working with relevant stakeholders to look for creative and holistic solutions to this emerging matter.

The Domestic Animal Management Plan was adopted at our meeting and I have called for a report to council on the pros and cons of introducing a cat curfew. Don't be alarmed...I would like to champion a creative and voluntary solution to ensuring our pets (dogs and cats) have the best life, while protecting our native wildlife. This doesn't necessarily mean fines and enforcement; I would rather see council working on education and encouraging community led solutions to this issue. Already in Walkerville there is a social licence to keep cats indoors at night; the Sandy Point community are urging folks to keep their cats indoors, and the Venus Bay community has a well-known passion for preserving and protecting our native flora and fauna. We can lead the way here folks: by working together to find a way to acknowledge the benefits of responsible pet ownership while still protecting one of our greatest natural assets.

A good news story for our coastal area was the funding allocated to construction of a cantilever platform at the Agnes Falls scenic reserve. This local attraction sees more visitors than Coal Creek and is listed as the largest single span waterfall in Victoria...right on our doorstep!

Much of our time as councillors is spent in briefing discussions, which happen each week, and further investigation and consultation on matters coming before us. Attending community meetings and liaising with community members is one way we can reflect the views and concerns of our community and represent the views of residents and ratepayers in our decisions.

I would encourage everyone to contact either myself or my fellow councillors if you have any matters you would like to raise, or concerns you would like to see addressed.



The first meeting of the advisory group for the Venus Bay Environment project was held during the last month; some great ideas being generated from the community members to enhance Van Cleef Reserve and look at interpretive signage in the park and in the town to promote the protection of our native wildlife. The project may also include environmental sculpture/s as a way of promoting a shared understanding of people and place. This project forms part of the \$400k capital infrastructure funding for Venus Bay; and is an exciting project for our coastal area.

DO YOU KNOW WHERE YOU ARE?



CAN WE FIND YOU

ANY EMERGENCY SERVICE such as C.E.R.T - CFA - SES - POLICE - AMBULANCE When "000" called

Have LARGE REFLECTIVE numbers on your gate or fence and know your Main intersection.

The Venus Bay Community Centre held its Annual General Meeting over the last month. A great way to reflect on the achievements of the past year, our annual report is available at the Centre or can be found on our website: www.vbcc.org.au

As a member of Neighbourhood Houses Victoria and a registered incorporated organisation, the Centre is governed by a volunteer committee of governance who set the strategic direction for the Centre and our endeavours. Our 3 year strategic plan is reviewed annually and reported through the annual report. The Venus Bay Community Centre acknowledges the significant contribution from all our wonderful volunteers who make the Centre a welcoming and inclusive place to connect and to be.



FREE COMMUNITY TRAILER

For a few years, we have had a community trailer that is able to be borrowed for short trips around Venus Bay. This has been a great service with many people using the trailer.

It is currently out of action as we are waiting to get new tyres...we are trying our hardest to find the right size tyres, so please be patient as we work on this.

MATTER OF FACT

If you would like to contribute an article or some community news or information to our newsletter, we would love to hear from you.

vbcc@bigpond.com.au

If you have an interest in helping to produce and distribute the newsletter each month, please contact Alyson on 5663 7499.



The Centre's Regular Groups

Native Plant Group Mondays 10-1

Crafty Girls Tuesday 12-3

Walking group Wednesdays 10am

Computer classes Wednesdays 11, 12 and 1pm.

Drama classes kids Wednesdays 5.30-6.30

Cook n Book PLAYGROUP Thursday 10.00 to 12 noon

Broadband for Seniors-during office hours

Public Internet access by donation

Book Club: 2nd Tuesday of the month 5-6.30pm

Contact details for VBCC Inc.

Situated at 27 Canterbury Rd, Venus Bay

Phone 56637499

Send mail to Post Office Box 786, Venus Bay, 3956

Email: vbcc@bigpond.com

Web site: www.vbcc.org.au

Office open Mondays, Wednesdays Thursdays from 9.30am to 4.00pm

Op Shop is open Monday, Wednesday and Thursday 9.30 am to 3pm
Saturday 10am to 2 pm

Venus Bay Community Centre is supported by:
Department of Health & Human Services (Victoria) and the
Commonwealth Government, South Gippsland Shire Council.

Our Website is www.vbcc.org.au

Find current and back issues of Matter of Fact on our website.
Please contact us if you wish to be on our email distribution list.